



CS602-1624FFP



CS602-1824FFP

CS602 | FIRST FOCAL PLANE TACTICAL RIFLESCOPES

Model No.	CS602-1624FFP	CS602-1824FFP
Magnification	1-6x	1-8x
Focal Plane	First Focal Plane (FFP)	First Focal Plane (FFP)
Objective Lens	24mm	24mm
Eye-piece Diameter	40mm	40mm
Exit Pupil	5mm-10mm	6mm-10mm
Optics Coating	Fully Multi-Coated	Fully Multi-Coated
Field of View (@100yds)	116.6-20 feet@100yds	116.6-14.8 feet@100yds
Eye Relief	90mm	90mm
Click Value	1/10MIL	1/10MIL
Adjustment Range	>50MIL	>50MIL
Reticle	Glass-etched	Glass-etched
Battery Type	CR2032	CR2032
Shock Resistance	1000G	1000G
Waterproof Rating	IP67	IP67
Length	248mm	245mm
Weight	500g	500g
Tube Diameter	30mm	30mm

CS603



CS603-41244



CS603-41644SF

Model No.	CS603-3515x44SF	CS603-31244SF	CS603-41644SF	CS603-552050SF	CS603-52050SF	CS603-41244
Magnification	3.5—15 x	3.0—12.0 x	4.2—15.8 x	5.5—22.0 x	5.0—20.0 x	4.0—12.0 x
Objective Diameter	44 mm	44 mm	44 mm	50 mm	50 mm	44mm
Ocular Lens Diameter	32 mm	32 mm	32 mm	32 mm	32 mm	32 mm
Field of View	4.78°—1.32°	5.3°—1.5°	4.8°—1.25°	3.35°—0.92°	3.5°—0.9°	4.78°—1.42°
Eye Relief	116 mm—81 mm	120 mm—80 mm	85 mm—70 mm	90 mm—70 mm	90 mm—70 mm	116 mm—81.2 mm
Focus Type	Side Focus	Side Focus	Side Focus	Side Focus	Side Focus	NO
Type of Reticle	Optical Fiber	Optical Fiber	Optical Fiber	Optical Fiber	Optical Fiber	Optical Fiber
Tube Diameter	30 mm	30 mm	30 mm	30 mm	30 mm	30 mm
Windage Range	± 35 MOA	± 35 MOA	± 35 MOA	± 30 MOA	± 30 MOA	± 35 MOA
Elevation Rang	± 35 MOA	± 35 MOA	± 35 MOA	± 30 MOA	± 30 MOA	± 35 MOA
Click Value	1/4 MOA	1/4 MOA	1/4 MOA	1/4 MOA	1/4 MOA	1/4 MOA
Length	340 mm	340 mm	340 mm	360 mm	360 mm	340 mm
Weight	710 g	710 g	710 g	780 g	780 g	710 g



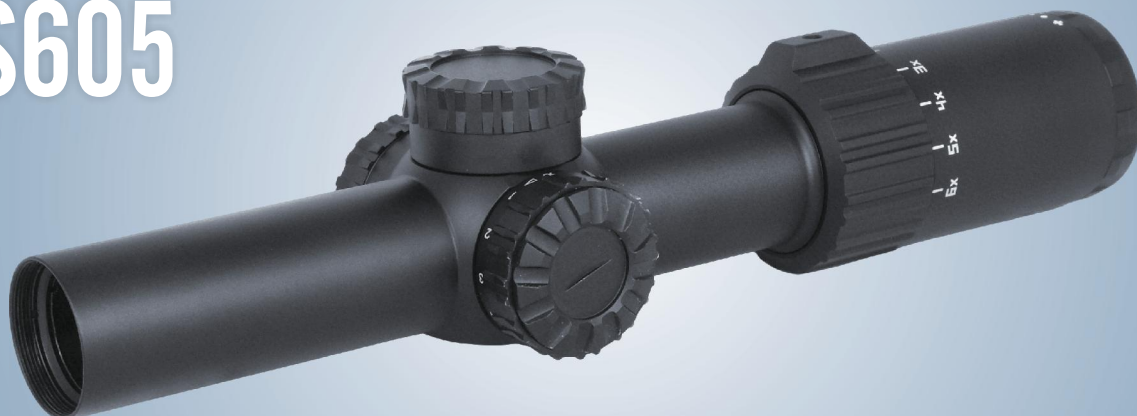
SUNSCOPE OPTICS LIMITED

UNIT 1909-1910, SOUTH TOWER, 371-375 HUANSI DONG ROAD, GUANGZHOU 510095, CHINA

TEL: +86 20 3761 5319 3761 5320 FAX: +86 20 3761 5316

E-MAIL: hanll@sunscope-optics.com dingxq@sunscope-optics.com sales@sunscope-optics.com Http://www.sunscope-optics.com

CS605



CS605-1624

Model No.	CS605-1624
Magnification	1-6X
Objective diameter(mm)	24
Maintube diameter(mm)	30
Eye Relief(mm)	96
Adjustment range (E/W)(MOA)	100/100
Working temperature	-25°C/+55°C
Storage temperature	-40C to +85C
Field of view(ft @100yds)	109.2-18.2
Coating	FMC

Model No.	CS405-11024E / CS405-11024F
Magnification	1-10X
Objective size (mm)	24
Eye Relief (in)	3.46-3.54
Field of View(FT @ 100YDS)	115.6-11.5
Windage adjustment range	> ±50MOA
Elevation adjustment range	> ±50MOA
Click value	1/4 MOA or 0.1Mil
Reticle	Etched / Fiber illuminated wire reticle
Tube size	30mm
Tube Construction (one or two piece)	One-Piece
Impact Resistance	1000g
Length (in)	10.91
Weight(OZ)	20.36

CS606



CS606-3940



CS606-3940IR
Fiber Reticle

Model No.	CS606-3940 / CS606-3940IR / CS606-3940AO / CS606-3940IRAO	CS606-41240 / CS606-41240IR / CS606-41240AO / CS606-41240IRAO
Magnification	3-9x	4-12x
Aperture (mm)	40	40
Eye relief (mm)	85-95	85-95
Tube Diameter(mm)	30	30
Click value(MOA)	0.25	0.25
Working temperature	-25°C/+55°C	-25°C/+55°C
Storage temperature	-40C to +85C	-40C to +85C
Field of view (ft @100yds)	40.4-13.47	30.3-10.1
Construction Material	A6063-T6	A6063-T6
Coating	FMC	FMC



SUNSCOPE OPTICS LIMITED

UNIT 1909-1910, SOUTH TOWER, 371-375 HUANSHI DONG ROAD, GUANGZHOU 510095, CHINA

TEL: +86 20 3761 5319 3761 5320 FAX: +86 20 3761 5316

E-MAIL: hanll@sunscope-optics.com dingxq@sunscope-optics.com sales@sunscope-optics.com Http://www.sunscope-optics.com



CS607-15520



CS607-2732



CS607-3940



CS607

Model No.	CS607-15520	CS607-2732
Magnification	1.5-5	2-7
Objective diameter(mm)	20	32
Tube diameter	1"	1"
Eyerelief(mm)	100	100
Click value	1/5 mil	1/10 mil
Field of view(ft @100yds)	84.9-25.5	63.7-18.2
Coating	FMC	FMC
Weight(g)	297.0	350.0

Model No.	CS607-3940
Magnification	3-9x
Aperture (mm)	40
Eye relief (mm)	85-95
Tube Diameter(mm)	1"
Click value(MOA)	0.25
Working temperature	-25°C/+55°C
Storage temperature	-40C to +85C
Field of view (ft @100yds)	40.4-13.47
Construction Material	A6063-T6
Coating	FMC



CS608

Model No.	CS608-31244AOE	CS608-21040AOE
Magnification	3*-12*	2*-10*
Objective lens (mm)	44	40
Ocular(mm)	34	34
Eyerelief(mm)	85-95	85-95
Two-Piece tube	Yes	Yes
Tube diameter mm	25.4	25.4
Adjustment rang(MOA)	±30	±30
Click Value	0.25MOA	0.25MOA
Field of View (°)	6.5-2.4	6.5-2.55
Illumination	Red & Green	Red & Green
Weight(g)	510	500
Length(mm)	310	300



CS608-31244AOE



CS608-21040AOE



SUNSCOPE OPTICS LIMITED

UNIT 1909-1910, SOUTH TOWER, 371-375 HUANSI DONG ROAD, GUANGZHOU 510095, CHINA

TEL: +86 20 3761 5319 3761 5320 FAX: +86 20 3761 5316

E-MAIL: hanll@sunscope-optics.com dingxq@sunscope-optics.com sales@sunscope-optics.com Http://www.sunscope-optics.com

CS609 | FIRST FOCAL PLANE TACTICAL RIFLESCOPES



CS609-73556FFIR

Model No.	CS609-11024FIR	CS609-1128FIR	CS609-73556FFIR
Magnification	1-10x	1-10x	7-35x
Objective lens (mm)	24	28	56
Ocular(mm)	38	38	37
Eyereief(mm)	85-90	85-90	80-90
One-piece tube	Yes	Yes	Yes
Tube diameter mm	30	34	34
Adjustment rang(MOA)	±100	±80	±30
Click Value	0.5MOA	0.5MOA	0.25MOA
Field of View (°)	22-2.23	22-2.23	3.18-0.65
Illumination	Red & Green	Red & Green	Red & Green
Weight(g)	520	760	960
Length(mm)	295	295	370



CS609-11024FIR



CS609-1128FIR



SUNSCOPE OPTICS LIMITED

UNIT 1909-1910,SOUTH TOWER,371-375 HUANSHI DONG ROAD,GUANGZHOU 510095,CHINA

TEL: +86 20 3761 5319 3761 5320 FAX: +86 20 3761 5316

E-MAIL: hanll@sunscope-optics.com dingxq@sunscope-optics.com sales@sunscope-optics.com Http://www.sunscope-optics.com

CS610&611



CS611-62450FFP



CS610-55050FFP



CS610-11028FFP

Model No.	CS610-11028FFP	CS610-151544FFP	CS610-44060FFP	CD610-55050FFP	CS611-62450FFP	CS611-62456FFP
Magnification Low	1-10x	1.5-15x	4-40x	5-50x	6-24x	6-24x
Objective Lens Diameter	28mm	44mm	60mm	50mm	50mm	56mm
Parallax Adjustment	N/A	Side Focus	Side Focus	Side Focus	Side Focus	Side Focus
Click Value	0.1Mil	0.1Mil	0.1Mil	0.1Mil	1/4MOA	1/4MOA
Windage Movement Range	±70 MOA	±60 MOA	±45 MOA	±40 MOA	±20 MOA	±20 MOA
Elevation Movement Range	±70 MOA	±60 MOA	±45 MOA	±40 MOA	±20 MOA	±20 MOA
Eye Relief	116-99mm/4.57-3.9in	116-99mm/4.57-3.9in	114-99mm/4.5-3.9in	135-105mm/5.3-4.1in	81-86mm/3.2-3.4in	81-86mm/3.2-3.4in
Field Of View	22.5°-2.25°	15°-1.5°	5.625°-0.5625°	4.5°-0.45°	4.08°-1.02°	4.6°-1.15°
Focal Plane	First Focus Plane	First Focus Plane	First Focus Plane	First Focus Plane	First Focus Plane	First Focus Plane
Reticle Type	Glass	Glass	Glass	Glass	Glass	Glass
Shock Proof	1200g	1200g 300times	1200g 300times	1200g	1200g	1200g
Water Proof	IP67	IP67	IP67	IP67	IP67	IP67
Length	261 mm/10.3 inch	299 mm/11.8inch	355 mm/14 inch	354 mm/13.9 inch	381 mm/15 inch	381 mm/15 inch
Weight	680 g/24 oz	851.5g/30 oz	1040g/36.7 oz	920g/32.5 oz	807g/28.5 oz	807g/28.5 oz
Tube Diameter	34 mm/1.34 inch	34 mm/1.34 inch	34 mm/1.34 inch	34 mm/1.34 inch	30 mm/1.18 inch	30 mm/1.18 inch

PRISM SCOPES



CPS-6002



CPS-TP4J126



CPS-6330A

Model No.	CPS-6002	CPS-TP4J126	CPS-6330A
Magnification	1X	1X	3X
Lens Size	18mm	26mm	30mm
Click Value	1moa/click	1/2MOA	0.25MOA
Adjustment Range	≥55moa	≥90moa	≥55moa
Parallax	≤1moa	≤1moa	≤1moa
Reticle	Multi-Reticle	Dot & Circle	Dot & Circle
Battery	CR2032	CR2032	CR2032
Housing Material	Aluminium 6061-T6	Aluminium 6061-T6	Aluminium 6061-T6
Dimension(LxWxH)	62x52x63mm	92X52X65mm	78X44.3X66.4
Shockproof	1000g	1000g	1000g
WaterProof	IP67	IP67	IP67



SUNSCOPE OPTICS LIMITED

UNIT 1909-1910, SOUTH TOWER, 371-375 HUANSHI DONG ROAD, GUANGZHOU 510095, CHINA

TEL: +86 20 3761 5319 3761 5320 FAX: +86 20 3761 5316

E-MAIL: hanll@sunscope-optics.com dingxq@sunscope-optics.com sales@sunscope-optics.com Http://www.sunscope-optics.com

PREMIUM DOT SIGHT



CD-S29W



CD-SE22



CD-SU28M



CD-SS28MS



CD-SS28M



Model No.	CD-S29W	CD-SE22	CD-SU28M	CD-SS28MS	CD-SS28M
Lens Size	28x19 mm	20x15.5 mm	30x22 mm	28x19 mm	28x19 mm
Click Value	1moa	1moa	1moa	1moa	1moa
Adjustment Range	≥50moa	≥50moa	≥50moa	≥50moa	≥50moa
Parallax	≤2moa	≤2moa	≤2moa	≤2moa	≤2moa
Parallax Distance	50 m	50 m	50 m	50 m	50 m
Reticle	3moa Dot	3moa Dot	3moa Dot & 32moa Circle	2moa Dot & 38moa Circle	3moa Dot & 32moa Circle
Battery	CR1632	CR1620	CR2032	CR2032 / Solar	CR2032
Sleep Mode	3 min	10 min	3 min	3 min	3 min
Housing Material	Aluminium 7075	Aluminium 7075	Aluminium 7075	Aluminium 7075	Aluminium 7075
Dimension(LxWxH)	40.8x32.3x26mm	40.8x26.5x25.6mm	45.2x35x32mm	45.2x33x29.5mm	45.2x31.5x28.5mm
Footprint	RMS/RMSc	RMS/RMSc	RMR	RMR	RMR
Shockproof	2000G	2000G	2000G	2000G	2000G
WaterProof	IP67	IP67	IP67	IP67	IP67

S=Solar Power



CD-SD55M



CD-S55MS



CD-S47M



CD-SW25M



CD-HD262304AF

Model No.	CD-SD55M	CD-S55MS	CD-S47M	CD-SW25M	CD-HD262304AF
Lens Size	31x22 mm	31x26 mm	Ø21 mm	Ø25 mm	26X23mm
Click Value	1moa	0.5moa	1moa	0.5moa	1moa
Adjustment Range	≥55moa	≥55moa	≥50moa	≥55moa	≥45moa
Parallax	≤2moa	≤2moa	≤2moa	≤2moa	≤2moa
Parallax Distance	50 m	100 m	50 m	50 m	100 yards
Reticle	2moa Dot & 40moa Circle	2moa Dot & 40moa Circle	3moa Dot & 65moa Circle	2moa Dot & 40moa Circle	multiply
Battery	CR2032	CR2 / Solar	CR2032	CR2032	CR1632
Sleep Mode	3 min	3 min	3 min	3 min	3 min
Housing Material	Aluminium 6061-T6	Aluminium 6061-T6	Aluminium 7075	Aluminium 6061-T6	6061
Dimension(LxWxH)	70x35x53mm	80x45x63mm	47.3x35x48.5(64.3)mm	68x46x65.3mm	51.5x31x41.5mm
Footprint					RMR
Shockproof	1000G	1000G	1000G	1500G	3000G
WaterProof	IP67	IP67	IP67	IP67	IP67

S=Solar Power



SUNSCOPE OPTICS LIMITED

UNIT 1909-1910, SOUTH TOWER, 371-375 HUANSI DONG ROAD, GUANGZHOU 510095, CHINA

TEL: +86 20 3761 5319 3761 5320 FAX: +86 20 3761 5316

E-MAIL: hanll@sunscope-optics.com dingxq@sunscope-optics.com sales@sunscope-optics.com Http://www.sunscope-optics.com

MAGNIFIER



CM-6326



CM-6426



CM-MG002A

Model No.	CM-6326	CM-6426	CM-6526	CM-MG002A
Magnification	3x	4x	5x	3x
Objective Lens Diameter(mm)	24.5	24.5	24.5	20
Field of View(ft@100yds)	40.9	31	23.7	39.37
Length(mm)	78	90	95	72
Weight(g)	283	303	306	252
Eye Relief(mm)	95	90	85	62
Ocular Fast Focus	YES	YES	YES	YES

DOT SIGHT AND MAGNIFIER COMBO

CMD-6001



Model No.	CD-SYZ30D	Model No.	CM-LE326
Window Lens Size	28mm	Magnification	3x
Adjustment range	±30MOA	Field of View ft@100yds)	40.9
Battery type	CR2032	Objective Lens Diameter	24.5mm
Waterproof	IP67	Prism	BAK4
Length	67mm	Eye Relief (mm)	90mm
Battery life	20000h	Fast Focus	YES
Shake-Awake	3 Minutes	Waterproof	IP67
		Shockproof	2000G
		Length(mm)	79.5



CD-XFD20
SOLAR



CD-61X20
SOLAR



Model No.	CD-XFD20	CD-61X20
Window Lens Size:	20X20mm	20mm
Adjustment range	≥±25MOA	≥±30MOA
Spot color	Red	1MOA
Battery type	CR1632	CR1632
length	48mm	46.5mm
Waterproof	IP67	IPX7
Shake-Awake	3 Minutes	3 Minutes



CD-HD2017ASPH



CD-HD2924ASPH

Model No.	CD-HD2017ASPH	CD-HD2924ASPH
Objective Lens Size	20 x 17mm	29x24mm
Lens Material	Aspherical Glass Lens	Aspherical Glass Lens
Parallax Setting	25 yards	25 yards
Parallax	≤2MOA	≤2MOA
Click Value	1.5 MOA	1 MOA
Total Elevation Range	60MOA (±30MOA)	90 MOA (±45MOA)
Total Windage Range	60MOA (±30MOA)	90 MOA (±45MOA)
Battery	*Built-in Rechargeable Lithium Battery, 35mAh (USB rechargeable, Type C port)*	CR2032
Battery life time	*Dot only: highest level 160hrs, mid level 3,100hrs, low level 12,000hrs Circle Dot: highest level 36hrs, mid level 750hrs, low level 3,400hrs*	Low level 50,000 hours +
Housing Material	Aluminium 6061	Aluminium 6061
Size (LxWxH)	40.8 x 26.4 x 26mm (w/o mount)	54x33.5x44mm (w/ mount)
Weight	31g	76g (w/ mount)
Waterproof	IP67	IP67
Shockproof	1500G	1500G
Footprint	RMSc	RMR



CD-QX100

Model No.	CD-QX100
Projection mode	Refracting-reflecting
Magnification	1x
Lens size	28x18±1mm
Field of view	14°
Battery	CR2450
Automatic shutdown	Automatic shutdown in 1 hour without operation
Reticle adjustment range	+/-60MOA
Reticle adjustment accuracy	1MOA
Disassembly accuracy	≤2MOA
Dimension	≤96x50x65mm
Weight	250g
Waterproof	IP67



SUNSCOPE OPTICS LIMITED

UNIT 1909-1910, SOUTH TOWER, 371-375 HUANSHI DONG ROAD, GUANGZHOU 510095, CHINA

TEL: +86 20 3761 5319 3761 5320 FAX: +86 20 3761 5316

E-MAIL: hanll@sunscope-optics.com dingxq@sunscope-optics.com sales@sunscope-optics.com Http://www.sunscope-optics.com

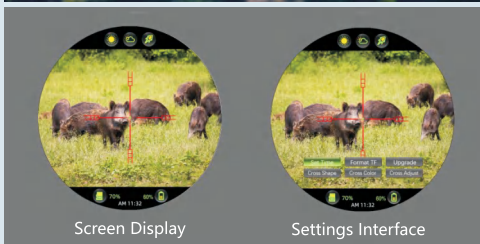
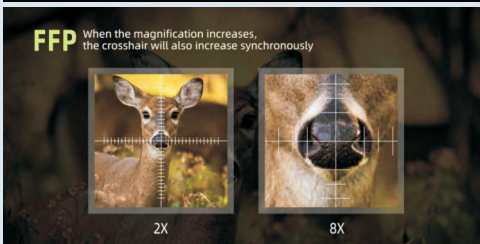
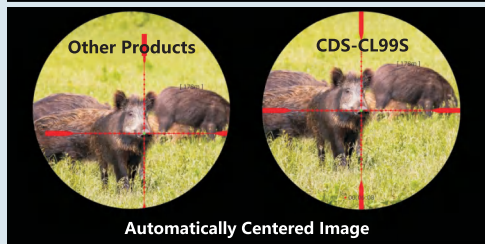
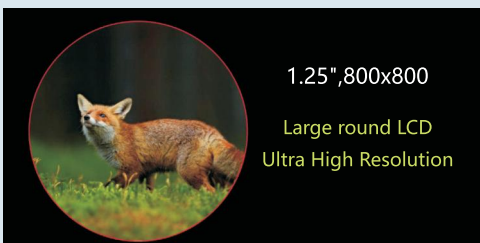
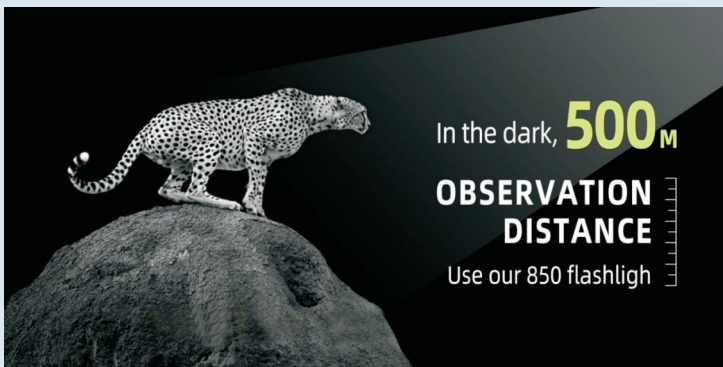
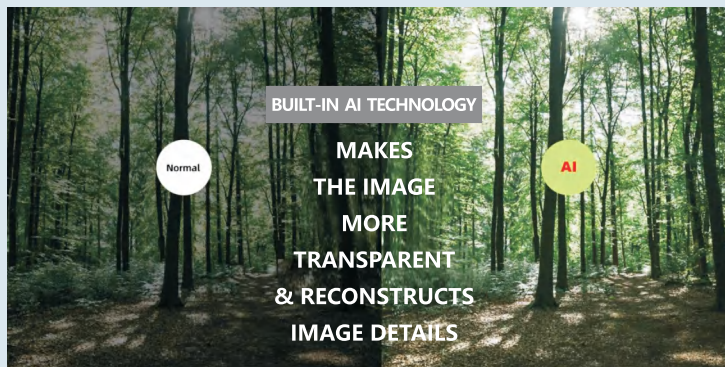


CDS-CL99S



CDS-MN99

CDS-CL99S / CDS-MN99	
Field of view at 100 yds	CDS-CL99S: 25ft (4.8°) / CDS-MN99: 50ft (9.6°)
Magnification	CDS-CL99S: 4.5X~36X / CDS-MN99: 2.5X~20X
Objective focal length	CDS-CL99S: 50mm / CDS-MN99: 25mm
Sensor	1/2.9 inch, 1920x1080
Display	1.25 Inch Round LCD , 800x800
PHOTO Resolution	1920x1080
Video Resolution	1920x1080@60fps
Laser rangefinder	1000m
AI color night vision	Yes
Automatically centered image	Yes
AI dehazing	Yes
FFP	Yes
RVA	Yes
Crosshair	4 reticle options & 6 Color Options
TF CARD	64G/128G/256G TF CARD
USB	type C, 2A
IR Illuminator	850nm/940nm, 3w
Battery type	Replaceable, 18650



SUNSCOPE OPTICS LIMITED

UNIT 1909-1910, SOUTH TOWER, 371-375 HUANSHI DONG ROAD, GUANGZHOU 510095, CHINA

TEL: +86 20 3761 5319 3761 5320 FAX: +86 20 3761 5316

E-MAIL: hanli@sunscope-optics.com dingxq@sunscope-optics.com sales@sunscope-optics.com Http://www.sunscope-optics.com